



Features

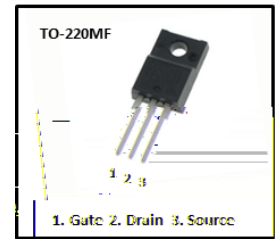
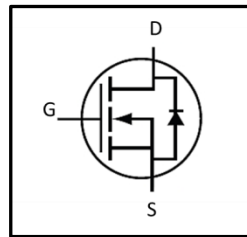
- 
- 
- 
- 



Product Summary	

Applications

- 
- 
- 



Ordering Information

Part Number	Marking	Package	Packaging



Parameter	Symbol	Test Conditions	Min	Typ	Max	Unit

Source Drain Characteristics <sup>(5)</sup>

Parameter	Symbol	Test Conditions	Min	Typ	Max	Unit
						ns

A





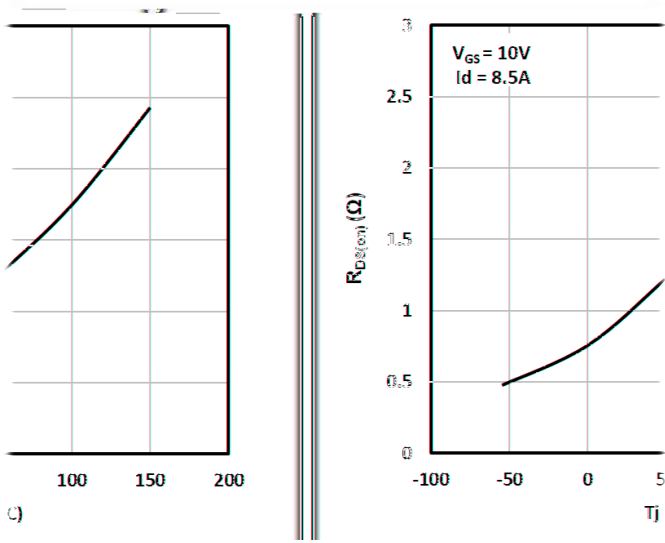


Fig. 9 On-resistance Characteristics vs. Temperature

Test Circuits and Waveforms

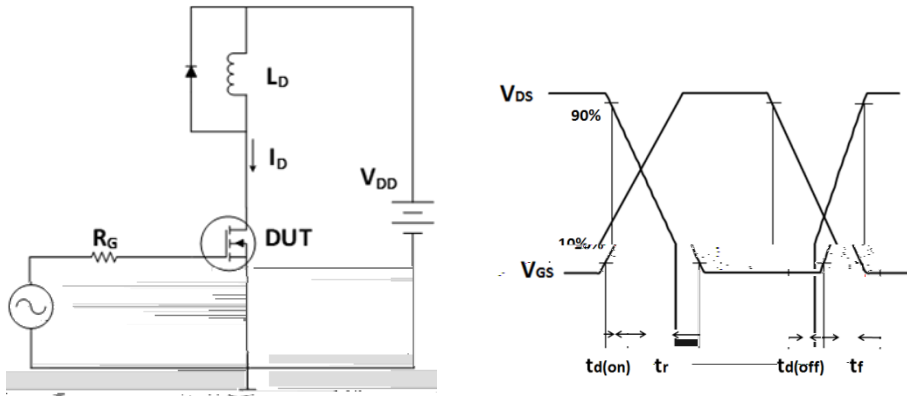


Fig. 1 Inductive switching time test circuit & waveforms

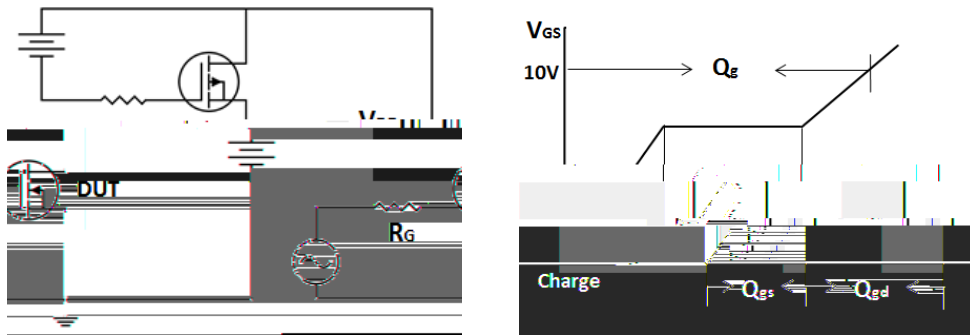


Fig. 2 Gate charge test circuit & waveform

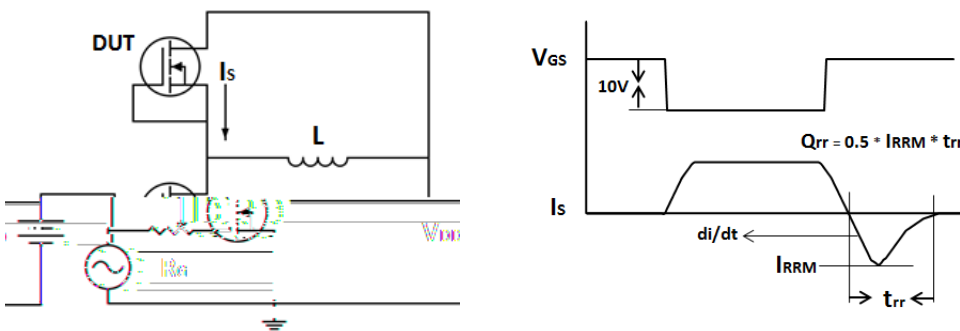


Fig. 3 Peak diode recovery dv/dt test circuit & waveforms



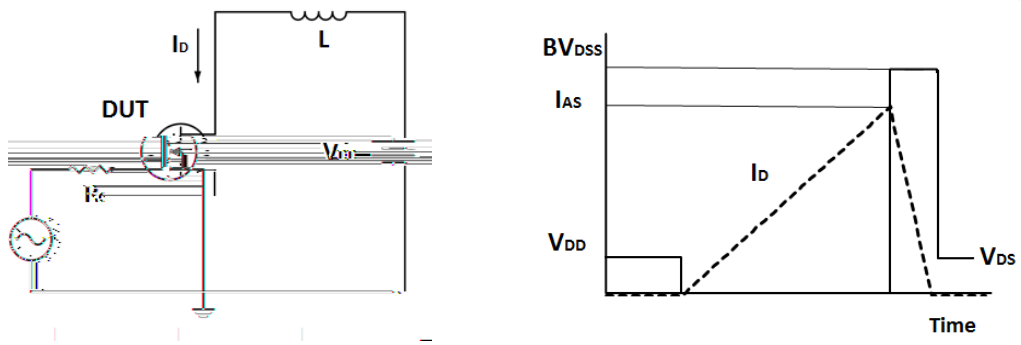
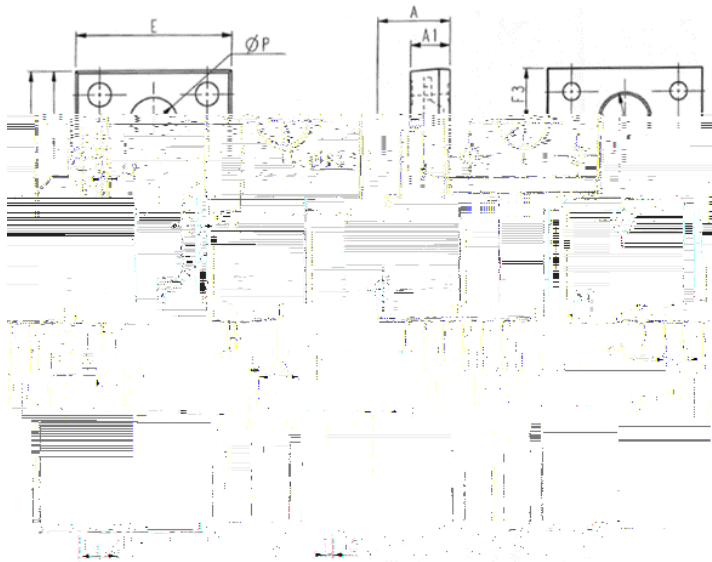


Fig. 4 Unclamped inductive switching test circuit & waveforms

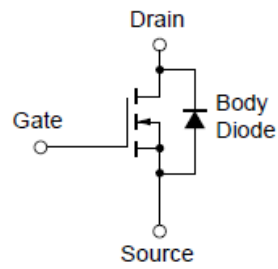
Package Drawing



SYMBOL	MM		
	MIN	NOM	MAX
E	9.96	10.16	10.36
A	4.50	4.70	4.90
A1	2.34	2.54	2.74
A2	0.30	0.45	0.60
A4	2.56	2.76	2.96
c	0.40	0.50	0.65
c1	1.20	1.30	1.35
D	15.57	15.87	16.17
H1	6.70REF <sup>1</sup>		
e	2.54BSC		
L	12.68	12.98	13.28
L1	3.03	3.23	3.43
ΦP	3.03	3.18	3.38
ΦP3	3.15	3.45	3.65
F3	3.15	3.30	3.45
G3	1.25	1.35	1.55
b1	1.18	1.28	1.43
b2	0.70	0.80	0.95

TO-220MF

Equivalent Circuit



---

Revision history of JCG60R180S specification

Version	Change Items	Effective Date

